

(Following Paper ID and Roll No. to be filled in your  
Answer Books)

Paper ID : 181806

Roll No. 

--	--	--	--	--	--	--	--	--	--

**B. ARCH.**

**Theory Examination (Semester-VIII) 2015-16**

**LANDSCAPE ARCHITECTURE**

**Time : 3 Hours**

**Max. Marks : 100**

**Section-A**

**Note : Read question paper carefully. Attempt all questions.**

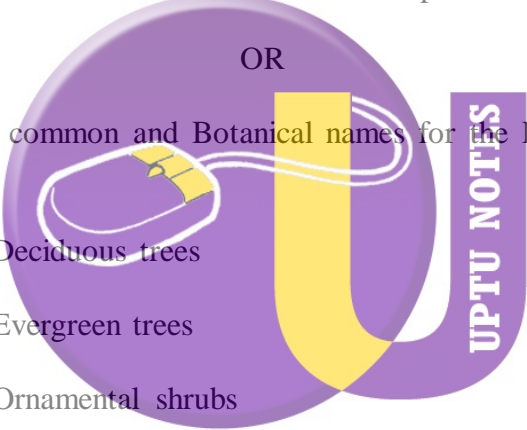
1. How landscape contributes in "Modifying the Microclimate"?  
Explain through various examples and neat sketches. 10
2. What are various factors affecting Landscape Design? Elaborate in detail with neat sketches and suitable examples. 10
3. Write short notes on any two of the following: 10
  - a) Landscape and its relevance to Architecture
  - b) Names of three Indian Landscape Architects along with their popular projects in India

- c) Role of Lighting in Landscape Design
- d) Plants as a cosmetic treatment to the Landscape Design
4. Contrast between Ram Manohar Lohia Park and Ambekar Park in Lucknow, as a sensitive Landscape Design. Elaborate it with neat sketches. 10
5. What do you understand by "Planting Design" illustrate it with neat sketches and suitable examples. 10

OR

Write common and Botanical names for the Following:

10

- 
- A large purple circular logo with a yellow 'U' shape in the center. The text 'UPTU NOTES' is written vertically in white on the right side of the purple circle.
- (a) Deciduous trees
- (b) Evergreen trees
- (c) Ornamental shrubs
- (d) Spiky plants
- (e) Groundcovers
6. Give construction detail for anyone of the following: 10
- Fountain detail
  - Pathway with curb stone detail

(2)

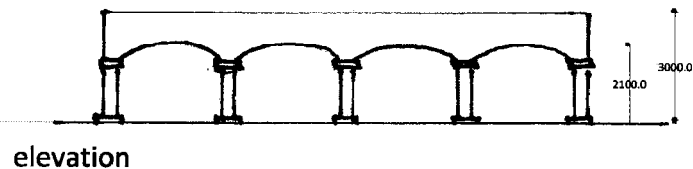
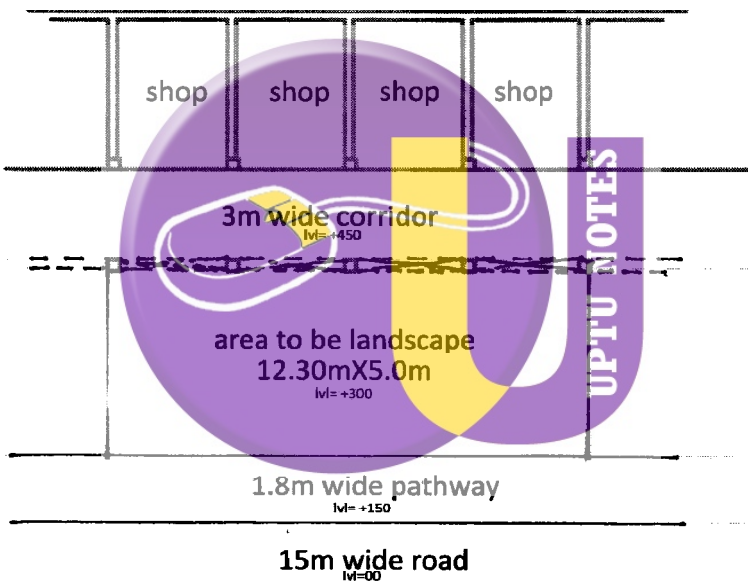
7. Give the Landscape proposal for a road side piazza, surrounded by 3.0 m wide corridor on one side and 1.8 m wide pathway on the other side, adjacent to the 15m wide road. The drawing shown below

Conceptual site plan (1:50)

Conceptual details/sections

Views

(20+12+08)



(3)